



Equestrian Village

at Palm Beach International Equestrian Center

jumping | dressage | entertainment | dining | shopping

Your Equestrian Lifestyle Destination



Palm Beach International Equestrian Center

jumping | dressage | entertainment | dining | shopping

Your Equestrian Lifestyle Destination



TABLE OF CONTENTS

- 4** | PALM BEACH INTERNATIONAL EQUESTRIAN CENTER MAIN GROUNDS
- 6** | WINTER EQUESTRIAN FESTIVAL
- 10** | WINTER EQUESTRIAN FESTIVAL EVENT HIGHLIGHTS
- 12** | MAP OF PBIEC MAIN GROUNDS
- 14** | ADEQUAN® GLOBAL DRESSAGE FESTIVAL
- 18** | MAP OF EQUESTRIAN VILLAGE
- 22** | PBIEC DIRECTORY
- 23** | THE SPECTATOR'S GUIDE TO EQUESTRIAN COMPETITION
- 24** | INTERNATIONAL POLO CLUB PALM BEACH
- 29** | MAP OF INTERNATIONAL POLO CLUB
- 30** | THE INTERNATIONAL POLO SCHOOL





Palm Beach International Equestrian Center

Palm Beach International Equestrian Center (PBIEC) is considered the most recognizable equestrian sporting venue in the United States. It encompasses a total of 500 acres — the competition rings alone cover over 80 acres. PBIEC has two core facilities, the Main Grounds and Equestrian Village, which collectively contain over 18 competition arenas, a derby field and one of the largest covered arenas in the world.

Both show grounds are operated by Equestrian Sport Productions, LLC (ESP). ESP owns and operates 42 weeks of United States Equestrian Federation (USEF) rated competition from August through June at PBIEC, including the Winter Equestrian Festival, a five-week Spring series, an eight-week Summer series, a seven-week Fall series, and a seven-week Holiday series.

Main Grounds

The Main Grounds house 256 permanent stalls, horse trails, pedestrian paths, golf cart tracks, and dedicated shopping areas like Vendor Village, Hunter Hill, Tiki Terrace and the International Shoppes. The 18 arenas with adjoining schooling rings all feature state-of-the-art footing. The feature of PBIEC is the International Arena that is surrounded by VIP box seating, stadium seating, and hospitality pavilions. It is highlighted by the famous bridge arching over the in-gate, where horses enter into the arena.

Spectator Entrance:

3400 Equestrian Club Drive, Wellington, FL 33414

Competitor Entrance & Administrative Offices:

14440 Pierson Road, Wellington, FL 33414

Palm Beach International Equestrian Center



Equestrian Village at Palm Beach International Equestrian Center

Built on almost 60 acres, Equestrian Village features the beautifully manicured grass derby field with natural obstacles, the Van Kampen Covered Arena, the International Ring surrounded by stadium seating and the Global Pavilion, the Wellington Equestrian Realty Arena that can fit three regulation-size dressage arenas, and 200 permanent stalls. This facility is home to the Adequan® Global Dressage Festival from January through March each year as well as several exciting hunter derbies, grand prix events, horse exhibitions, and equestrian clinics.

Spectator & Competitor Entrance:

13500 South Shore Blvd., Wellington, FL 33414

Palm Beach International Equestrian Center



About the Winter Equestrian Festival (WEF)

The Winter Equestrian Festival (WEF) is the largest and longest-running circuit in horse sport. A 12-week show jumping competition for hunters, jumpers and equitation, it is held annually from January through March. Each show week starts on Wednesday and concludes on Sunday, with major competitions showcased in the International Arena daily and on Saturday nights.



WEF Facts

- Riders from 52 countries and all 50 U.S. states come to compete at the Winter Equestrian Festival.
- Exhibitors compete for more than \$10 million dollars in prize money, the largest amount distributed over 12 weeks in the world.
- WEF offers competition for children, junior, adult amateur, and professional equestrians. With 80 unique divisions, the circuit sees competitors from the ages of 2 to 70 years old.
- More than 6,500 horses, with a collected net value of over half a billion dollars, compete at WEF throughout the 12 weeks.
- Over 100 food and retail vendors provide a unique shopping experience for spectators and competitors of all ages.
- During the three-month span of WEF, more than 250,000 spectators will pass through the gates.



Watching the Equestrian Action

Daily Highlights

Visit WEF between 8:00 a.m. to 5:00 p.m. from Wednesday through Sunday to watch everything from adorable pony hunters to Olympic show jumpers.

Stroll the grounds at your leisure, grab a bite to eat and shop till you drop at our unique boutiques, art galleries, jewelers, saddlery, high-end fashion and much more.

Saturday Night Lights

Saturday evenings during WEF feature the highest level of competitive show jumping of the week. In addition to the Grand Prix class, Saturday Night Lights features an array of entertainment, food and fun. Families enjoy live music, pony rides, face painting, a petting zoo, the Venetian carousel, thousands of spectators pack the venue to watch the competition and enjoy the amenities at PBIEC. General admission to SNL is free. For parking details, see page 21.



Things To Do at the WEF

Shopping Around The Show Grounds

Shop in a variety of locations throughout PBIEC, including the Vendor Village, Hunter Hill, Tiki Terrace, International Shoppes and The Bridge Deck. These boutiques offer fashion for men, women and children, jewelry, home design, fine art, photography, horse equipment and more. See page 12 for venue map.

Grab a Bite to Eat

A variety of food vendors are located throughout the property, ranging from healthy smoothies and crepes to delicious pizza and burgers. For a full list of our offerings, visit the map on page 12.



Shop the WEF Boutique

Located at Tiki Terrace overlooking the International Arena and in the Vendor Village. Find the perfect WEF clothing, posters, or souvenirs.

Take a Lunch Tour

See the world-renowned equestrian competition, vendors, stables and various venues that Palm Beach International Equestrian Center has to offer, followed by a catered lunch with your group. Your tour will allow you to explore twelve competition rings, the stabling area where horses prepare for competition, and a stroll through Vendor Village. The tour will be both exciting and informative, and there is a good chance you will see some Olympic riders gearing up for competition! Equestrian Lunch & Tours are available by appointment only, Wednesday through Sunday during the WEF season. Call 561.793.5867 to book your tour.

Winter Equestrian Festival



Great Charity Challenge presented by Fidelity Investments® and Community Outreach

The Great Charity Challenge presented by Fidelity Investments® (GCC) was founded by Mark Bellissimo and his daughter, Paige, in 2010 as a way for the equestrian community to give back to Palm Beach County.

In the last 10 years, the GCC has distributed over \$13.5 million to 240 Palm Beach County charities. The event typically takes place early in the WEF season during a Saturday Night Lights competition with gates opening at 5:30 p.m. and first horse on course at 6:30 p.m. Riders dress in costume to a new theme each year. Parking is located at 13500 South Shore Boulevard, Wellington, FL.

The Great Charity Challenge is a relay style equestrian jumping competition with teams consisting of two junior/amateur riders combined with one world-class rider. The 34 rider teams are randomly paired with 34 charities that serve Palm Beach County. Some features of GCC include:

- 100% of the proceeds go straight to benefit charities
- The winning team of riders will be awarded \$150,000 for its charity
- Every charity selected is guaranteed to win a minimum of \$15,000
- For charities not selected for GCC, there will be random drawings and grants provided for each charity.

Participating charities are required to utilize 75% of their winnings within Palm Beach County, so the donations directly impact the community. For a complete list of charities and donations, visit greatcharitychallenge.com.

Equestrian Sport Productions wishes to thank all the generous individuals, families and corporate sponsors who donate to what has become the largest single-day net charity event in the state of Florida.

For more event information, visit greatcharitychallenge.com

Winter Equestrian Festival

Event Highlights During The Winter Equestrian Festival

Battle of the Sexes is a fun, action-packed exhibition that kicks off the Saturday Night Lights season on Week 1 of WEF. Teams of men and women face off in exciting rounds, including match races, speed classes, and three-rider relays.



Riders under the age of 25 have the exciting opportunity to compete in FEI competitions through the **Hermès Under 25 Grand Prix Series** and gain valuable experience at the Grand Prix level while competing in a variety of settings, such as under the lights, on the grass field, and as a team. The rider with the most points at the end of the series wins special prizes. The U25 series begins on week 2 of WEF and continues every other week, culminating with the final on Week 11.



Come watch the future equestrian Olympians at our adorable **Leadline** classes that take place on weeks 1, 5, and 12 of WEF.



Held during week 4 of WEF, the **Great Charity Challenge** presented by Fidelity Investments® gives over \$1,000,000 in one evening to the Palm Beach community. Support and cheer on your favorite charity or team as riders and horses compete in themed costumes.



Grooms have the opportunity to compete for prize money based on their horse's cleanliness and preparedness during weeks 5 and 10 of WEF. There are separate divisions for hunters and jumpers.



Hunt seat or hunter competitions are based upon elegant traditions arising from the foxhunt. Hunters differ from jumpers in that they are judged on the style, movement, and technical proficiency of the horse and rider, rather than their speed. The highlight hunter classes take place during week 6 of WEF.

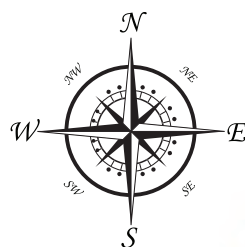
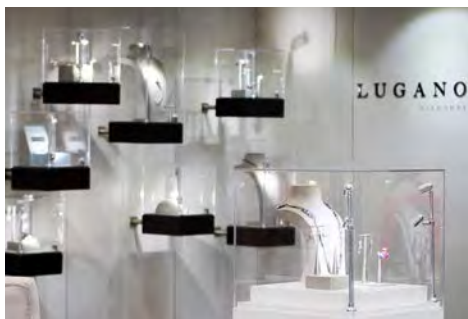
FEI Nations Cup is one of the most exciting events of the season where nations are represented by teams that compete for national pride. Traditionally, the FEI Nations Cup takes place during week 8 of WEF.

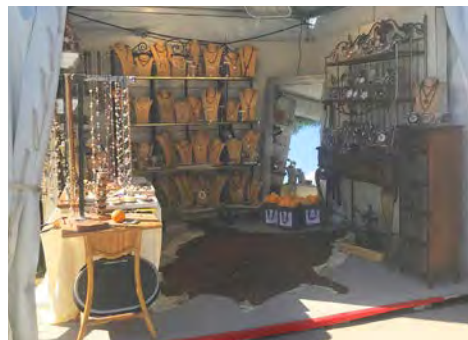


The **\$500,000 Rolex Grand Prix CSI 5*** takes place during week 12 of WEF. As the circuit's largest single-class prize money event, the top show jumpers in the world will be competing. This is the final Saturday Night Lights of the season for spectators and equestrian fans to enjoy.



PALM BEAC





THE INTERNATIONAL EQUESTRIAN CENTER (Main Grounds)

Adequan® Global Dressage Festival

About the Adequan® Global Dressage Festival (AGDF)

The Adequan® Global Dressage Festival (AGDF) is one of the world's largest international and national dressage circuits featuring seven CDI events. Included are four FEI World Cup qualifiers, one 4* and one 5*, the only non-championship CDIO Nations Cup in the western hemisphere, as well as weekly U.S. National events. The AGDF offers more than \$600,000 in prize money for the seven international competitions, making it one of the richest circuits in the world.



Adequan® Global Dressage Festival

AGDF Facts

More than 1,000 horses and riders compete at AGDF each year, traveling from 30 U.S. states and 26 countries, including Australia, Canada, Colombia, Denmark, and the Dominican Republic. These riders compete for top scores in the internationally-rated “CDI” competitions, which are events sanctioned by the International Equestrian Federation (FEI). At four of the CDI events offered here, points are earned for world rankings and for standings to qualify for the FEI World Cup Finals.

Dressage is one of three equestrian disciplines in the Olympics (the other two are Jumping and Eventing). All three have been part of the Olympic Games since 1912. Dressage is a sport that is beneficial for all equestrian activities as it represents the ultimate in training.

Dressage riders must complete fixed patterns, similar to the technical performances in gymnastics and ice skating competitions. The performances are assessed by a panel of judges that award marks ranging from 10 for excellent to 0 for not performed. Grand Prix is the highest level of the sport and riders compete in the Grand Prix, Grand Prix Special, and Grand Prix Freestyle classes.

The AGDF is also one of the few circuits in the U.S. to hold a CPEDI, a qualifying event for Para-Equestrian Dressage. Para-Equestrian Dressage is the only Equestrian discipline that is included in the Paralympic Games, where it has been a regular fixture since 1996. With the intention of creating opportunities for all people with disabilities to compete and achieve their goals in equestrian sport, athletes are classified according to the level of their disability/impairment so as to provide for meaningful competition.



Friday Night Stars



Friday Night Stars

The AGDF highlights the musical freestyle event with “Friday Night Stars,” held each Friday night of the CDI events. Some of the best dressage combinations in the world will complete tests to music choreographed especially for them and their horse. Spectators will hear everything from classic orchestral pieces to the latest Top 40 pop hits.

In the musical freestyle, horse and rider “dance” to their own choreography in a routine about six minutes in length. The freestyle has become the most popular entertainment in the sport, with top combinations drawing large crowds to the feature night at the AGDF.





International Dressage Competition

The AGDF is a proving ground for the United States Equestrian Team, as well as other international teams, and serves as host of observation trials and qualifiers for such important international events as the Fédération Equestre Internationale (FEI) World Cup Finals, the Olympic Games and FEI World Equestrian Games.

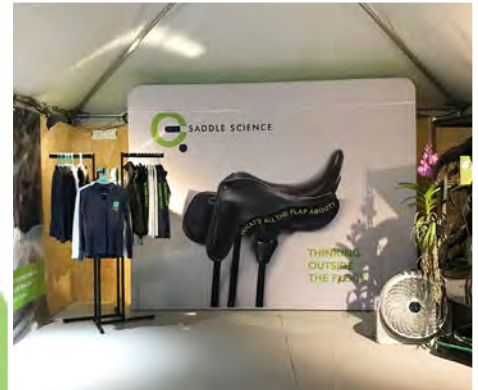
In addition to top level sport, the AGDF hosts an entire range of classes available for pony, junior, and amateur dressage riders in four USEF-rated National events.

General admission to Friday Night Stars is free! General on-site parking is available for \$10 per carload and valet parking is \$20.

Map of Equestrian Village



Adequan® Global Dressage Festival Vendors



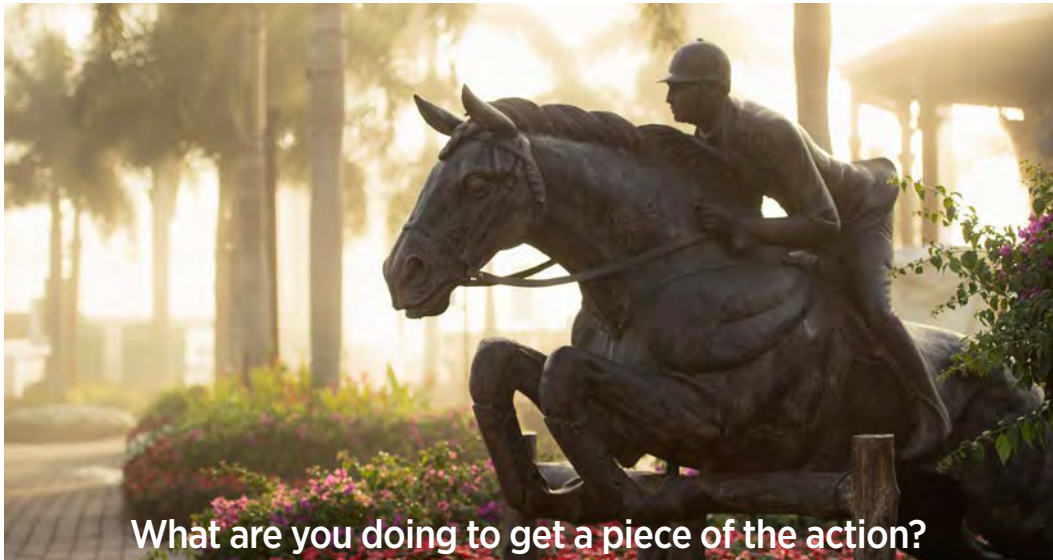
Thank You To All Our Competitors for Your Support



Palm Beach International Equestrian Center

Host of the world-famous Winter Equestrian Festival, Adequan® Global Dressage Festival and the Great Charity Challenge presented by Fidelity Investments®

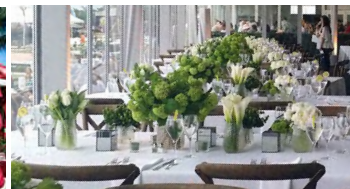
The equestrian industry has an annual impact of \$250 million on Palm Beach County*



Sponsorship



Advertising/Retail



Hospitality

For more information on how to get involved with PBIEC, visit page 22 for contacts.

PBIEC PARKING INFORMATION

All general admission to PBIEC events is free!

Free general parking for Saturday Night Lights is available at 13500 South Shore Blvd. with shuttle service.

On-site parking for Saturday Night Lights is available at 3400 Equestrian Club Dr. for \$20 per carload or \$30 for valet.



*According to industry analyses (\$100m equestrian and \$120m tourism expenditures).



PBIEC Directory

PALM BEACH INTERNATIONAL EQUESTRIAN CENTER

561.793.JUMP (5867) | pbiec.com

GENERAL INFORMATION & TOURS

561.793.5867

info@equestriansport.com

ADVERTISING & VENDORS

Annette Goyette

561.784.1120

agoyette@equestriansport.com

SPONSORSHIP

sponsorship@equestriansport.com

MARKETING & COMMUNICATIONS

marketing@equestriansport.com

VIP BOX SEATS

Annette Goyette

561.784.1120

agoyette@equestriansport.com

GREAT CHARITY CHALLENGE

PRESENTED BY FIDELITY INVESTMENTS®

Anne Caroline Valtin

acv@greatcharitychallenge.com

SPECIAL EVENTS

Vaneli Bojkova

561.784.1110

vbojkova@equestriansport.com

THE SUITES & TIKI HUT

Patti Miele

561.784.1125

pmiele@equestriansport.com

INTERNATIONAL CLUB MEMBERSHIP

Kathleen LaMour

561.784.1106

klamour@equestriansport.com

All photos courtesy of:

White Fence Equine Photography, SusanJStickle.com, Kimberlyn Beaudoin, ©PBIEC, ©Sportfot

FOLLOW US ONLINE!



Facebook:

www.facebook.com/equestriansportproductions

www.facebook.com/winterequestrianfestival

www.facebook.com/globaldressagefestival



Twitter:

@esp_wef

@esp_gdf



Instagram:

@esp_wef

@adequanglobaldressagefest

The Spectator's Guide to Equestrian Competition

GRAND PRIX SHOW JUMPING

Jumping is the best known and is also one of the three Olympic equestrian sports, along with Dressage and Eventing. As in all Equestrian sports men and women compete on equal terms. The Olympic sport of Grand Prix show jumping is the highest and most challenging level of jumping competition. Men and women compete as equals over a set course of obstacles that can be as tall as 1.60 meters (5.25 feet) in height. They must clear all of the fences without knocking down a rail and within the time allowed in order to return for the second round, also known as the “jump-off,” and be the fastest with the least faults to win.

GUIDE TO SHOW JUMPING SCORING

Penalties in show jumping competitions are referred to as “faults.” Knocking down a rail or a pole on a jump is 4 faults, as is putting a foot in the water jump or the first refusal. In all jumper classes, falls and going off-course result in elimination, as does a second refusal.

SHOW JUMPING FAULTS & PENALTIES

Knocking over a jump:	4 faults
Refusing a jump:	4 faults
Two refusals:	Eliminated
Rider falls off:	Eliminated
Over the time allowed:	1 fault for every second or portion thereof over the time allowed.

HUNTERS

Hunt seat competitions are based upon elegant traditions arising from the foxhunt. Hunters differ from jumpers because they are judged on the style, movement, and technical proficiency of the horse and rider within the constraints of the set course design. Hunters should display jumping ability, manners, style, an even pace, and quality.

EQUITATION

Equitation competition is offered for junior and amateur riders and is judged based on the style and form of the rider. Horses are not judged in this discipline, but successful riders will ensure that their horses are well behaved. Riders can be judged over fences or on the flat.

DRESSAGE

Dressage is a competitive equestrian sport, defined by the International Equestrian Federation (FEI) as “the highest expression of horse training.” The rider will be relaxed and appear effort-free while the horse willingly performs the requested movement. In modern dressage competition, successful training at the various levels is demonstrated through the performance of “tests,” which include a prescribed series of movements ridden within a standard arena. Dressage is considered the most artistic of the equestrian sports and can be traced back centuries. It is the highest expression of horse training. The Freestyle is especially choreographed and performed to music.

FEI

Fédération Equestre Internationale is based in Lausanne, Switzerland and is the governing body for all Olympic equestrian disciplines.

CONCOURS DE SAUT INTERNATIONAL – CSI

The ranking system for show jumping CSI is broken down into a starring system, the higher the prize money the higher number of stars: e.g., CSI 5* prize money is over \$500,000. CSI-W is a show jumping world cup competition.

CONCOURS DE DRESSAGE INTERNATIONAL – CDI

The ranking system for dressage with the same starring system as for show jumping.

International Polo Club Palm Beach



About the International Polo Club Palm Beach (IPC)

The International Polo Club Palm Beach (IPC) is one of the most premier polo destinations in the world. It hosts the greatest high-goal teams and the most prestigious polo tournaments in the United States. World-renowned players and polo enthusiasts alike come to Wellington, Florida each winter season to enjoy their love of the sport in the most prominent and well-equipped polo facility the sport has to offer.

Spanning nearly 250 acres, IPC is the largest and most spectator-friendly polo facility in the United States. It is also home to an elite semi-private club. Players pilot ponies at speeds that can reach 35 miles per hour across a pitch the size of nine football fields. IPC also hosts a range of other outdoor field sports including rugby, field hockey, and soccer. In 2017, the Florida Sports Foundation named IPC the Large Market Sports Venue of the Year.

Created with players and spectators in mind, IPC includes seven state-of-the-art tournament fields. They can accommodate multiple games simultaneously, ensuring that the action continues from the first to the last game of the day. All polo matches are open to the public, with free admission Monday through Saturday.

Sunday Polo

The Florida polo season runs from January through the end of April. IPC offers a variety of ticket and hospitality options for our Sunday feature matches. Gates open at 12 p.m. on Sundays with matches beginning at 3 p.m. on the U.S. Polo Assn. Field.

Box Seats: Located above the stadium seats, the VIP box seats offer an impressive view of the action. These exclusive boxes can each seat eight. While the boxes are typically purchased as a set of seats, there are a limited number of individual box seats available for each match.

International Polo Club Palm Beach



Green Seats: Spread out over three sections (south, center, and north), Green Seats are situated along the field closest to the action. Full service bars are located on the north and south ends of the section.

Tailgates: On either side of The Pavilion, tailgate tents are set up for polo fans to enjoy a more relaxed experience on Sunday. Reserve one of the coveted 10x10-foot high peak tents for the season and receive 12 tickets for each match to invite your friends and family to join you.

The Pavilion: Brunch features include an ever-changing array of delicious items spread out over various stations. With a lively atmosphere and a field-side view of the polo match, The Pavilion is a prime ticket to the action.

Celebrity Cruises® Polo Lounge: Looking for an elevated polo experience? Then settle into a seat in the Celebrity Cruises® Polo Lounge for the ultimate VIP treatment including field-side lounge seating, gourmet brunch options, luxury gift bags and expedited valet entry.


International Polo Club Palm Beach




Activities on Sunday

Several activities are offered for all Sunday afternoon games across the property. The fun-filled Kids Zone sponsored by Wellington Regional Medical Center will be available for children to enjoy bouncy houses, games, face painting, and more. Want to shop? Head over to the IPC gift shop located behind the stadium or check out the USPA Brand Shop! During half-time everyone is invited onto the field for a complimentary glass of champagne and ice cream – and to stomp some divots! The fun continues after the match in the Pavilion at the After Party. Live entertainment and cocktails will be served to celebrate the winning team.

FOLLOW US ONLINE

 **Facebook:** facebook.com/intlpoloclub

 **Twitter:** [@intlpoloclub](https://twitter.com/intlpoloclub)

 **Instagram:** [@internationalpoloclub](https://www.instagram.com/internationalpoloclub)

International Polo Club Palm Beach

High-Goal Tournaments at IPC

During the 17-week season from December through April

IPC hosts three 18-goal tournaments and three 22-goal tournaments.

18 Goal

Herbie Pennell Cup

Rated at 8 goals indoors, Alfred “Herbie” Pennell was one of the top arena players in this country’s greatest era of indoor polo, the 1950s and 1960s. As a 6-goal player outdoors, Herbie proved to be an asset to every team he played on. Always a cagey ball handler and a suburb horseman, Herbie was also one of the most successful polo club managers.

Joe Barry Memorial Cup

Harold “Joe” Barry has been described as a galloping oak tree with the soul of a poet. An impenetrable back at 9 goals, no one could hit a longer ball or provide a more reliable presence. Soft-spoken off the field and ever the gentleman on the field, polo has no better role model than Joe.

Ylvisaker Cup

A visionary businessman and former captain of the Yale polo team, Bill Ylvisaker founded Palm Beach Polo & Country Club. He also founded the Polo Training Foundation to teach and develop young polo players. During his playing career, Bill was a 7-goal player and won three U.S. Open championships, two Coronation Cups against England and Australia, the USPA Gold Cup and four national 20-goal championships. He served as chairman of the USPA from 1970-75.

22 Goal

Gauntlet of Polo™

The Gauntlet of Polo™ is survival of the fittest as the World’s preeminent teams, most skilled athletes and finest horses come together for three months to battle head to head across the C.V. Whitney Cup, the USPA Gold Cup®, and the U.S. Open Polo Championship®. In addition to the three titles at stake, any team that wins all three events will be crowned Gauntlet Champion. With a total prize of \$1 million and recognition as Gauntlet Champion, the series is designed to create North America’s most dramatic polo competition and most entertaining experience for athletes, teams, sponsors and fans.

• C.V. Whitney Cup

This tournament, first held in 1979, is named in memory of Cornelius Vanderbilt “Sonny” Whitney who, along with his cousin John Hay Whitney, was a major polo patron in the 1930s. The son of Hall of Fame patron Harry Payne Whitney, C.V. won the U.S. Open three times (twice against his brother) and was a renowned owner and breeder of Thoroughbred horses.

• USPA Gold Cup®

The 22 Goal USPA Gold Cup®, first played in 1974 at the Oakbrook Polo Club in Illinois, is a symbol of professionalism, good sportsmanship and high-goal polo at its finest. This tournament has been played at various polo clubs throughout its history. Since 2007 IPC has proudly hosted this prestigious event.

• U.S. Open Polo Championship®

The U.S. Open Polo Championship®, the most prestigious tournament in the United States, dates back to 1904 when it was first played at Van Cortlandt Park, New York. It has been played at IPC since 2004.

Rules of the Game

THE GAME OF POLO

A sport unlike any other, polo showcases the powerful bond between a player and his or her equine partner. As one of the oldest team sports, polo is an exhilarating combination of horsepower, athleticism and control. Competing on a 300 by 160 yard grass field, players score by driving the ball into the opposing team's goal using a bamboo mallet while riding at speeds of up to 35 mph.

TEAMS & HANDICAPS

A team consists of four mounted players and can be a mix of both men and women. Players are handicapped on a scale of -2 to 10, as determined by a player's horsemanship, hitting ability, quality of horses, team play and game sense. The team handicap is the sum of its players' total handicaps. A player's jersey number reflects the position they play, with each number indicating a different objective.

PLAY

Plays are based on the "line of the ball," an imaginary line created by the ball as it travels down the field. It represents a right-of-way for the last player striking the ball, and is the basis for most fouls in the game. Players may try to hook or "ride off" their opponents in an effort to gain control of the ball.

THE HORSES

Although the real stars of the game are called polo "ponies," the term is just a tradition; an old rule limiting their height was dropped in 1919. Today's players prefer horses with a Thoroughbred's speed and stamina in their bloodlines. These four-legged

athletes can run two miles in a single chukker: seven-and-a-half minutes of starting, stopping, swapping from offense to defense in a single stride. The mane is shaved and the tail wrapped so that they are not entangled in reins, mallets and other equipment, especially when the horses are bumping shoulder to shoulder at 35 mph.

EQUIPMENT

Players wear a safety helmet, knee-high boots, white pants, jersey and carry a polo mallet held in the right hand during play. The mallet is made of a bamboo shaft measuring between 48 to 54 inches in length with a wooden head. The game ball is made of hard plastic and is comparable in size to a baseball.

THE OFFICIALS

During games, two mounted Umpires officiate on the field while a Referee assists from the sidelines. The rules of polo are designed to allow both the players and their equine partners the opportunity to maximize their athletic skills in a safe and fair environment.

HALFTIME

As a sport steeped in tradition, the "Divot Stomp" is one of polo's oldest practices. At halftime, spectators are invited to walk onto the field to socialize and replace the divots that are created by the horses' hooves during play. The ten-minute break in the middle of the game gives players and horses a chance to rest and regroup.

For more information on the rules and regulations of polo please visit uspolo.org

International Polo Club



The International Polo School



The International Polo School accepts students from all ages, riding levels, and disciplines for polo lessons. The program currently has over ten ponies available for polo lessons, seven days a week by appointment. The ponies are stabled on-site at the International Polo Club and lessons will take place on one of the club's practice fields. Group lessons, practice chukkers, and training on the polo simulator are also available.

Want more game experience? Join our low goal league! This program offers students a chance to play in fun and safe polo matches. For more information about lessons and the low goal league, contact info@internationalpoloclub.com.





Gladiator Polo™

Gladiator Polo™ originated in Wellington, FL as a way to expand the reach of equestrian sport to fans of action-packed events like hockey or football. It combines elements of both Field Polo and Arena Polo. Contrary to traditional equestrian competitions where audience participation is encouraged only before and after a rider competes, Gladiator Polo™ is fueled by a rowdy crowd. Spectators are encouraged to cheer on their favorite team throughout the entire match.

FAQs

- There are two teams of three players pitted against each other in a small, enclosed arena, giving spectators an up close and personal look at the action.



GLADIATOR POLO™

- The horses and riders wear distinctive team colors — from the players' helmets all the way down to the horses' leg wraps — making it easy for spectators to follow the game and cheer on their favorite side.
- The match is played on a regulation 300' x 150' field, enclosed by walls of four or more feet in height.
- The game consists of six chukkers each lasting for five minutes. Riders change horses at the end of each chukker.
- The game ball is similar to a mini soccer ball, larger than the small and hard plastic ball used outdoors.

For more information, visit
gladiatorpolo.com



©ALEX PACHECO

International Polo Club Palm Beach

polo | entertainment | dining | shopping

Your Equestrian Lifestyle Destination



INTERNATIONAL POLO CLUB
PALM BEACH

BOX OFFICE & CONCIERGE

561.282.5334

boxoffice@internationalpoloclub.com

MEMBERSHIP

membership@internationalpoloclub.com

SUNDAY BRUNCH TICKETS

561.838.3409

internationalpoloclub.ticketleap.com

SPONSORSHIP

sponsorship@equestriansport.com

SPECIAL EVENTS

events@internationalpoloclub.com

MARKETING & MEDIA

media@internationalpoloclub.com

ADVERTISING

info@internationalpoloclub.com

POLO COMPETITION HOTLINE

561.282.5290