

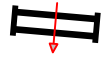


Wellington Regional  
Medical Center



# WEF 1

E.R. MISCHE GRAND  
HUNTER RING



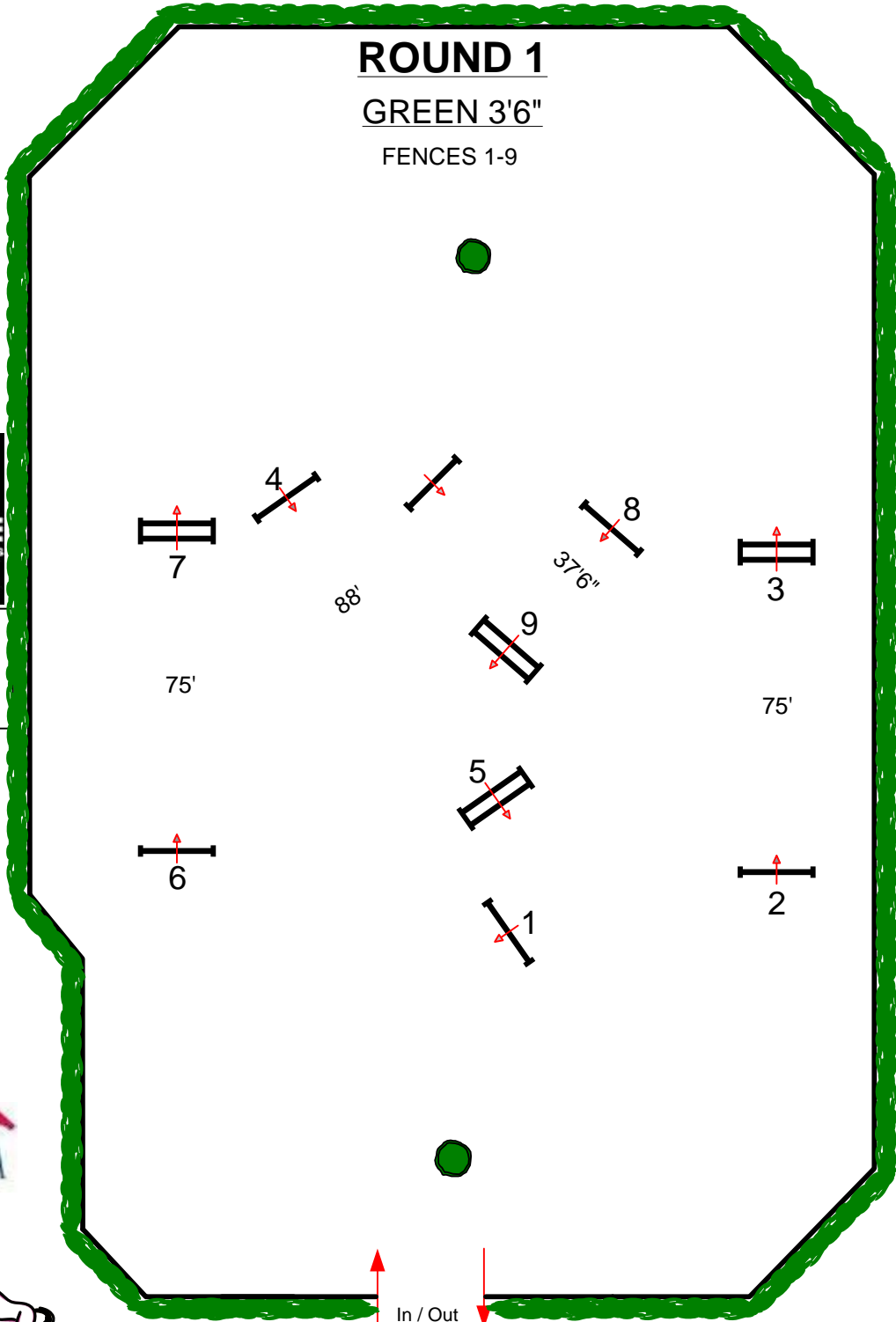
## ROUND 1

GREEN 3'6"

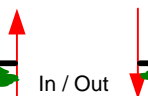
FENCES 1-9



JUDGE



BY: DANNY MOORE 





Wellington Regional  
Medical Center



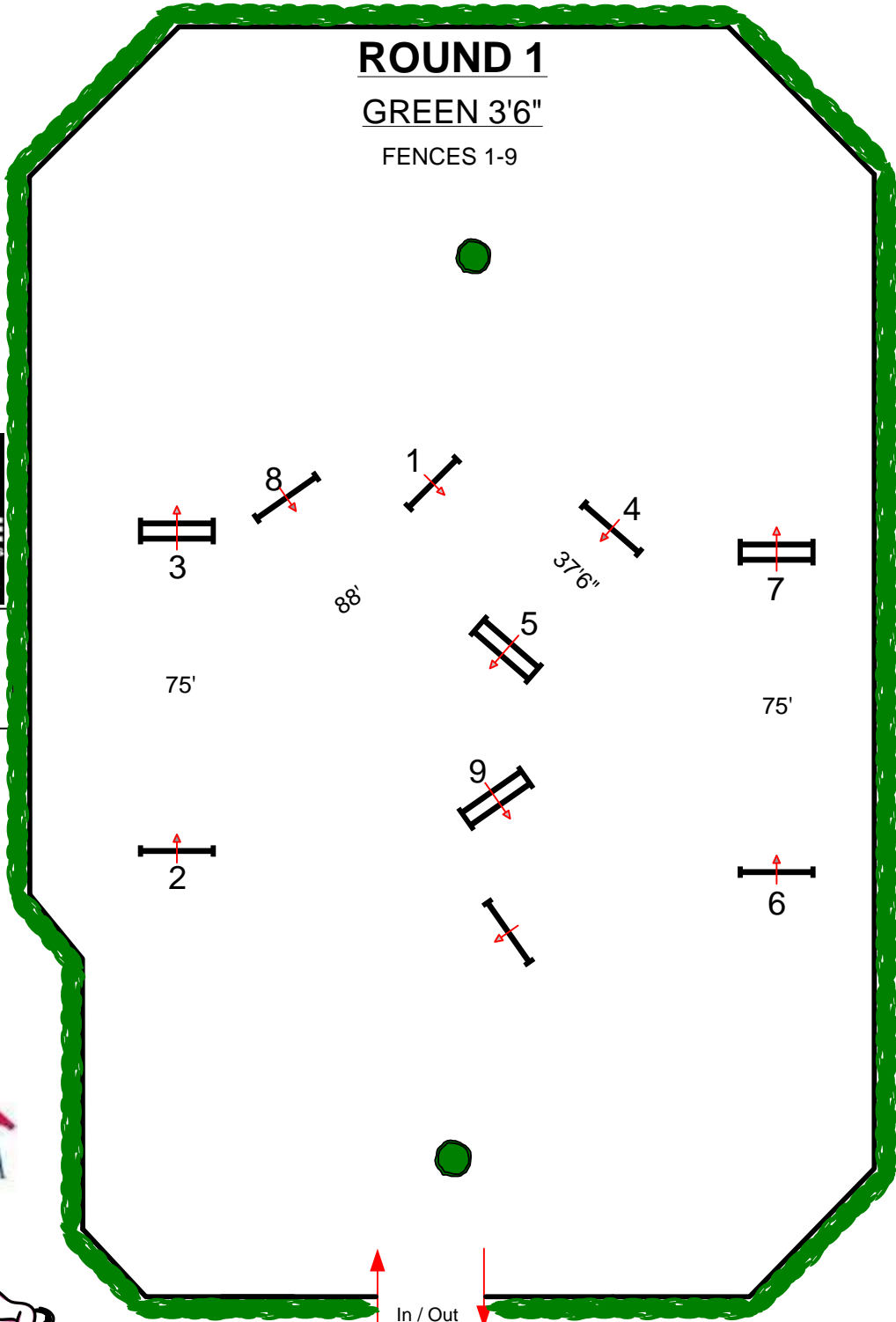
# WEF 1

E.R. MISCHE GRAND  
HUNTER RING

## ROUND 1

GREEN 3'6"

FENCES 1-9



JUDGE



BY: DANNY MOORE 



Wellington Regional  
Medical Center

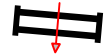


# WEF 1

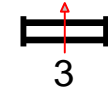
E.R. MISCHE GRAND  
HUNTER RING

## ROUND 1

GREEN CONF/ HIGH PERFORMANCE CONF/  
GREEN 3'9"/ HIGH PERFORMANCE  
FENCES 1-9



JUDGE

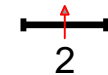


3'6"-75'  
3'9"-76'  
4'-77'

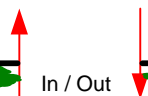
4  
3'6"-37'6"  
3'9"-38'  
4'-38'6"

3'6"-88'  
3'9"-89'  
4'-90'

3'6"-75'  
3'9"-76'  
4'-77'



BY: DANNY MOORE





Wellington Regional  
Medical Center



# WEF 1

E.R. MISCHE GRAND  
HUNTER RING



## ROUND 2

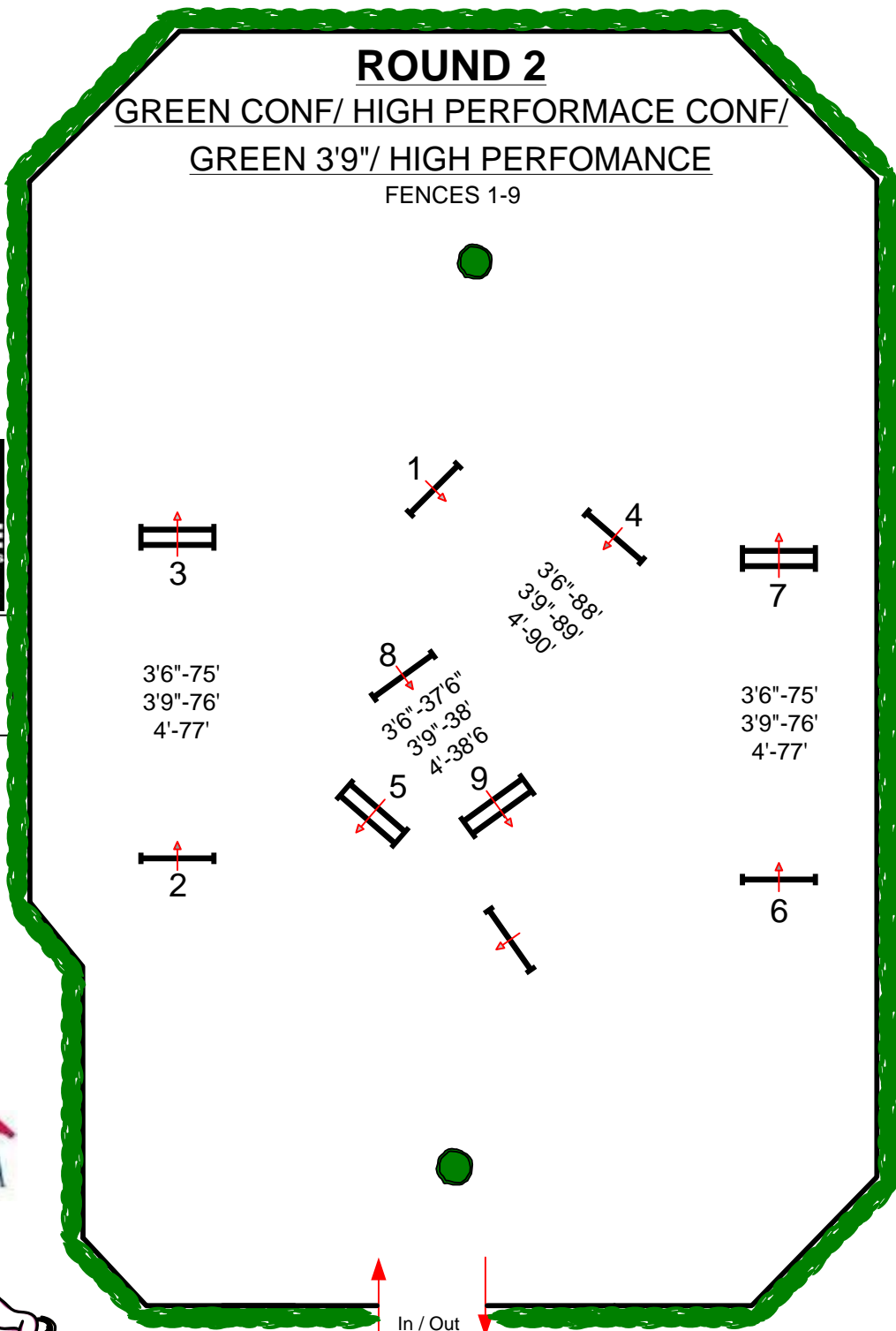
GREEN CONF/ HIGH PERFORMANCE CONF/  
GREEN 3'9"/ HIGH PERFORMANCE  
FENCES 1-9



JUDGE



SELLIER - FRANCE



BY: DANNY MOORE

In / Out