



## Palm Beach International Equestrian Center

jumping | dressage | polo | entertainment | dining | shopping



*Your Equestrian Lifestyle Destination*





## TABLE OF CONTENTS

- 4 | **PALM BEACH INTERNATIONAL EQUESTRIAN CENTER MAIN GROUNDS**
- 5 | **EQUESTRIAN VILLAGE AT THE PALM BEACH INTERNATIONAL EQUESTRIAN CENTER**
- 6 | **WINTER EQUESTRIAN FESTIVAL**
- 12 | **PBIEC MAIN GROUNDS MAP**
- 14 | **ADEQUAN® GLOBAL DRESSAGE FESTIVAL**
- 19 | **PBIEC EQUESTRIAN VILLAGE MAP**
- 20 | **COMPETITOR PHOTO COLLAGE**
- 21 | **PROMOTE YOUR BUSINESS**
- 22 | **PBIEC DIRECTORY**
- 23 | **THE SPECTATOR'S GUIDE TO EQUESTRIAN COMPETITION**
- 24 | **INTERNATIONAL POLO CLUB**







© Elena Lusenti

## Palm Beach International Equestrian Center Main Grounds

Palm Beach International Equestrian Center is considered the most recognizable equestrian sporting venue in the United States. It encompasses a total of 500 acres, and the competition rings alone cover over 80 acres. PBIEC has two core facilities containing over 18 competition arenas, including one derby field and the largest covered arena in the world. Both show grounds are operated by Equestrian Sport Productions, LLC (ESP). Equestrian Sport Productions owns and operates 42 weeks of United States Equestrian Federation (USEF) rated horse shows from September through June at the Palm Beach International Equestrian Center in Wellington, Florida.

The Main Show Grounds house 256 permanent stalls, wash racks, horse trails, pedestrian paths, and golf cart tracks, along with dedicated shopping areas like Vendor Village, Hunter Hill, The Bridge, and International Shoppes.

The 18 arenas with adjoining schooling rings all feature state-of-the-art footing. The feature of PBIEC is the International Arena (357'x256') that is surrounded by VIP box seating, general admission seating, and hospitality pavilions. It is highlighted by the famous bridge arching over the in-gate, where horses enter into the arena, and serves to welcome everyone to the best equestrian facility in the world.

### Spectator Entrance:

3400 Equestrian Club Drive, Wellington, FL 33414

### Competitor Entrance & Administrative Offices:

14440 Pierson Road, Wellington, FL 33414



© Elena Lusenti

## Palm Beach International Equestrian Center Equestrian Village

Equestrian Village, built on almost 60 acres, features a beautifully manicured grass derby field with natural obstacles adjacent to the Adequan® Global Dressage Festival grounds, which house a main arena surrounded by grandstand seating and the Global Pavilion, 200 permanent stalls, the Wellington Equestrian Realty Arena that can fit three regulation-size dressage arenas, and one of the world's largest covered arenas (360'x210'), the Van Kampen Arena.

In addition to the facility being home to world-class dressage, it will also host exciting jumper derbies and grand prix events, horse exhibitions, and equestrian clinics.

### Spectator and Competitor Entrance:

13500 South Shore Blvd., Wellington, FL 33414



© Susan J. Stickle.com





## About The Winter Equestrian Festival (WEF)

The Winter Equestrian Festival (WEF) is the largest and longest-running circuit in horse sport, a 12-week show jumping competition for hunters, jumpers, and equitation held annually commencing January of each year. WEF is produced and managed by Equestrian Sport Productions, LLC. (ESP).

Each show week starts on Wednesday and concludes on Sunday, with major competitions showcased in the International Arena daily and on Saturday nights.



## WEF Facts

Riders from 42 countries and 50 U.S. states come to compete at the Winter Equestrian Festival.

Exhibitors compete for more than \$9 million dollars in prize money, which is the largest amount distributed over 12 weeks in the world.

WEF hosts the worlds premier winter equestrian event and offers competition for children, junior, adult amateur, and professional equestrians. With 80 unique divisions, WEF sees competitors from the ages of 2-70 years old.

More than 7,000 horses, with a collected net value of over half a billion dollars, compete at PBIEC throughout the 12 weeks of WEF.

Over 100 food and retail vendors provide a unique shopping experience for spectators and competitors of all ages.

During the 12 weeks of WEF, 250,000 spectators will pass through the gates. On Saturday Nights, over 10,000 spectators will pack the stands to watch the Saturday Night Lights Grand Prix. Families can enjoy fun activities such as, pony rides, face painting, live music, petting zoos and more during the Saturday Night Lights events held each week.

## Watching The Equestrian Action

### Daily Highlights

Visit WEF during the day from Wednesday through Sunday during the winter competition season and watch 12 arenas with everything from adorable pony hunters to Olympic show jumpers.

Stroll the grounds at your leisure, grab a bite to eat and shop till you drop at our unique boutiques, art galleries, jewelers, high-end fashion and so much more.

### Saturday Night Lights

Evenings during the WEF season not only consist of the most celebrated show jumping of the week in the International Arena, but an exciting array of entertainment. In addition, families can spend time at the children's fair, having fun in the bounce houses, visiting the petting zoo, riding the genuine Venetian Carousel or pony rides. There is also a band, a variety of performers, shopping, food, and more.





## Fun Things To Do At the WEF

### Shopping Around The Show Grounds:

You are invited to shop in a variety of locations throughout the PBIEC, including the Vendor Village, Hunter Hill Tiki Terrace,, and The Bridge Deck. These boutiques offer fashion for men, women and children, jewelry, home design, fine art, photography, horseware and more.



### Shop at the WEF Boutique

Located at Tiki Terrace overlooking the International Arena and in the Vendor Village. Find the perfect WEF clothing, posters, or souvenirs.



### Grab a Bite to Eat

A variety of Food Vendors are located throughout the property, including:

**Tito's Tacos:** Margaritas, Tacos, Burritos, Chips, Salsa

**Tiki Hut:** Grilled Chicken, Variety Burgers, Grilled Fish, Salads

**Oasis Café** in the Vendor Village

### Take a Lunch & Tour

See the world-renowned equestrian competition, vendors, stables and various venues that Palm Beach International Equestrian Center has to offer, followed by a catered lunch with your group. Your tour will allow you to explore twelve of the competition rings, the stabling area where horses prepare for competition, and a stroll through Vendor Village. The tour will be both exciting and informative, and there is a good chance you will see some Olympic riders gearing up for competition! Equestrian Lunch & Tours are available by appointment only, Wednesday through Sunday during the WEF season. Call 561.793.5867 to book your tour.



## Great Charity Challenge presented by Fidelity Investments® and Community Outreach

The Great Charity Challenge presented by Fidelity Investments® (GCC) was founded by Mark Bellissimo and his daughter, Paige, in 2010 as a way for the equestrian community to give back to Palm Beach County.

In the last nine years, the GCC has distributed over \$12 million to 200 plus Palm Beach County Charities. The event typically takes place early in the WEF season during a Saturday Night Lights competition with gates opening at 5:30 p.m. and first horse on course at 6:30 p.m. Riders dress in costume to a new theme each year. Parking is located at 13500 South Shore Boulevard Wellington, FL 33414.

The Great Charity Challenge is a relay style equestrian jumping competition with teams consisting of two junior/amateur riders combined with one world-class rider. The 34 rider teams are randomly paired with 34 charities that serve Palm Beach County. Some features of GCC include:

- 100% of the proceeds go straight to benefit charities
- The winning team of riders will be awarded \$150,000 for its charity
- Every charity selected is guaranteed to win a minimum of \$15,000
- For charities that are not selected for GCC, there are random drawings and grants provided for each charity.

All participating charities are required to utilize 75% of their winning in Palm Beach county, so the donations are directly impacting the community. To view a complete list of charities and donations, please visit [www.greatcharitychallenge.com](http://www.greatcharitychallenge.com). Equestrian Sport Productions wishes to thank all the generous individuals, families and corporate sponsors who donate to what has become the largest single-day net charity event in the State of Florida.

For more event information, please contact: [acv@greatcharitychallenge.com](mailto:acv@greatcharitychallenge.com). See more at: [greatcharitychallenge.com](http://greatcharitychallenge.com)



## Events Throughout Winter Equestrian Festival

Grand Prix Show Jumping provides a level of excitement that is unmatched in most sports and is the highest level of this Olympic discipline.



FEI Nations Cup is one of the most exciting events of the season where nations are represented by teams that compete for national pride. Traditionally, the FEI Nations Cup takes place during WEF 8.

Hunt seat or hunter competitions are based upon elegant traditions arising from the foxhunt. Hunters differ from jumpers in that they are judged on the style, movement, and technical proficiency of the horse and rider within the constraints of the set course design.



The \$500,000 Rolex Grand Prix CSI 5\* takes place on week 12 of WEF. The top show jumpers in the world compete for the circuit's largest single-class prize money.

The Battle of the Sexes is a fun, action-packed exhibition that has teams of men vs. women in exciting classes like match races, a speed class, thee-rider relay, and match race.



Leadline class, home of our Future Olympians - bring your kids to watch our kids!



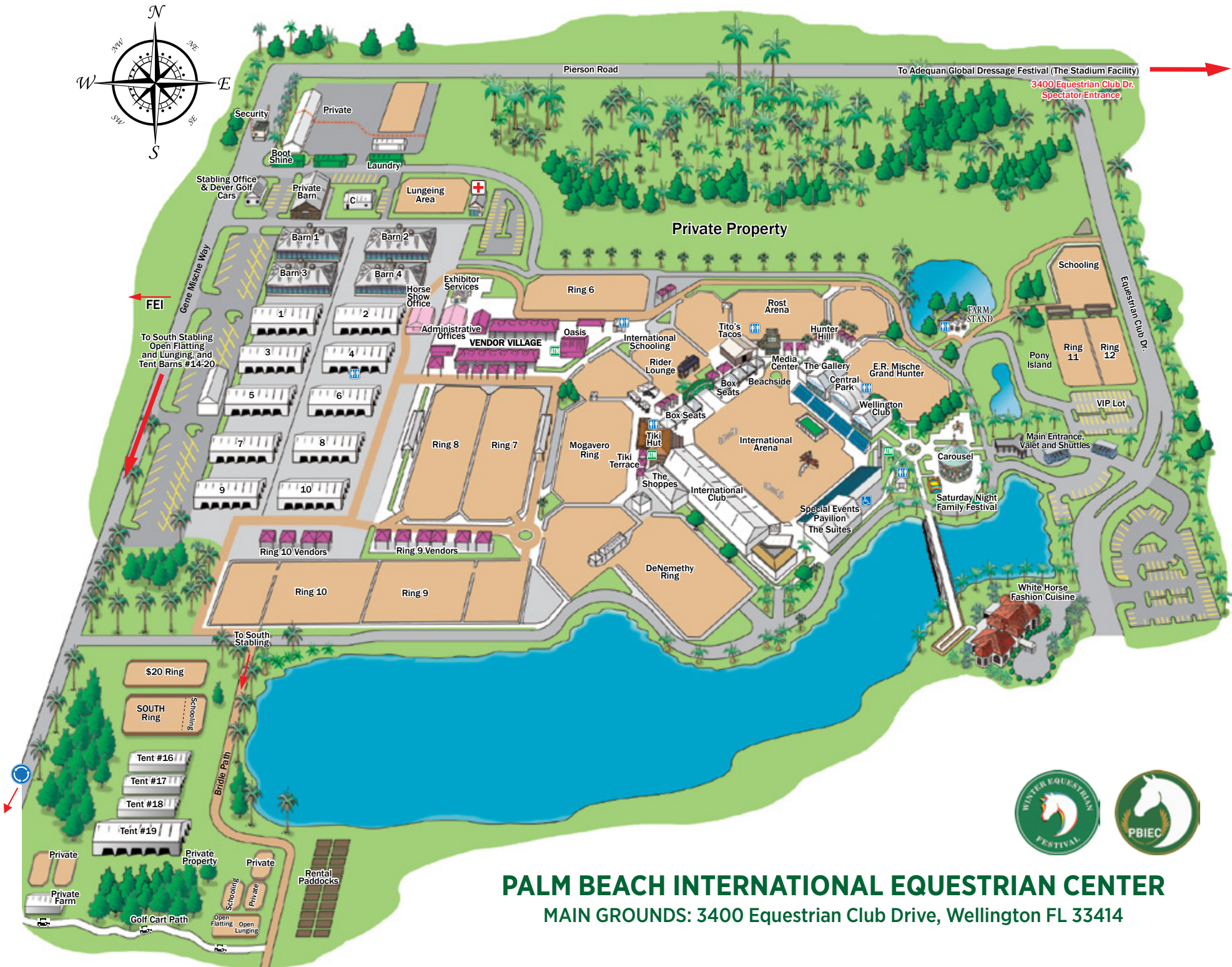
The Great Charity Challenge presented by Fidelity Investments® gives back over \$1,000,000 in one evening to the community. Support and cheer on your favorite charity or team.



Each week throughout the Winter Equestrian Festival show jumpers have the chance to compete in the 1.50m Championship Jumper Series. Equestrians earn points based on their placings in each class throughout the season.

Riders under the age of 25 have the exciting opportunity to compete in FEI competitions through the Hermès Under 25 Grand Prix Series and gain valuable experience at the Grand Prix level while competing in a variety of settings, such as at night, on the grass field, and as a team. The rider with the most points at the end of the series wins special prizes.









## About The Adequan® Global Dressage Festival (AGDF)

The Adequan® Global Dressage Festival is one of the world's largest international and national dressage circuits featuring seven CDI events. Included are four FEI World Cup qualifiers, one 4\* and one 5\*, the only non-championship CDIO Nations' Cup in the Western Hemisphere, as well as weekly U.S. National events. The AGDF is offering more than \$600,000 in prize money for the seven international competitions, making it one of the richest circuits in the world. Equestrian Village, built on almost 60 acres, features a beautifully maintained grass derby field with natural obstacles next to the Adequan® Global Dressage Festival grounds. The facility houses a

main arena surrounded by grandstand seating, 200 permanent stalls, the Wellington Equestrian Realty arena that can fit three regulation-size dressage arenas, and one of the world's largest covered arenas (360'x210'), the Van Kampen Arena.

In addition to the facility being home to world-class dressage, it will also house exciting jumper derbies and grand prix events, horse exhibitions, and equestrian clinics.

## AGDF Facts

At this year's Adequan® Global Dressage Festival, riders from many countries such as Australia, Canada, Colombia, Denmark, Dominican Republic, the United States, and more will be competing for top scores in the internationally rated "CDI" competitions, which are events sanctioned by the International Equestrian Federation (FEI). At four of the CDI events offered here, points are earned for world rankings and for standings to qualify for the FEI World Cup Finals.

Dressage is one of three equestrian disciplines in the Olympics (the other two are jumping and eventing.) All three have been part of the Games held once every four years since 1912. Dressage is a sport that is beneficial for all equestrian activities as it is the ultimate in training.

Dressage riders must complete fixed patterns, similar to the technical performances in gymnastics and ice skating competitions. The performances are assessed by a panel of judges that award marks ranging from 10 for excellent to 0 for not performed. Grand Prix is the highest level of the sport, and riders compete in the Grand Prix, Grand Prix Special, and Grand Prix Freestyle classes.

The AGDF is also one of the few events in the United States to hold a CPEDI, a qualifying event for Para-Equestrian Dressage. Para-Equestrian Dressage is the only Equestrian discipline that is included in the Paralympic Games, where it has been a regular fixture since 1996. With the idea of creating opportunities for all people with disabilities to compete and achieve their goals in equestrian sport, athletes are classified according to the level of their disability/impairment so as to provide for meaningful competition.







## Friday Night Stars

The AGDF highlights the musical freestyle event “Friday Night Stars,” held each Friday night of the CDI events. Some of the best dressage combinations in the world will complete tests to music choreographed especially for them and their horse. Spectators will hear everything from classic orchestral pieces to the latest Top 40 pop hits.

In the musical freestyle, horse and rider “dance” to their own choreography in a routine about six minutes in length, the freestyle has become the most popular entertainment in the sport, with top combinations drawing large crowds to the feature night at the AGDF.

In addition to top level sport, the AGDF hosts an entire range of classes available for pony, junior, and amateur dressage riders in four USEF-rated National events.



## International Dressage Competition

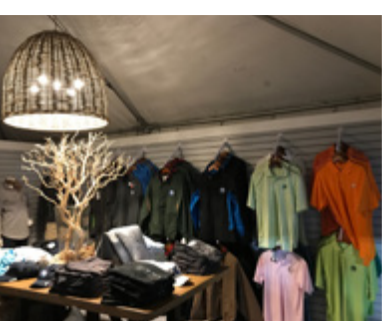
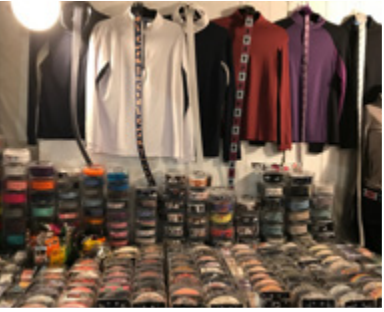
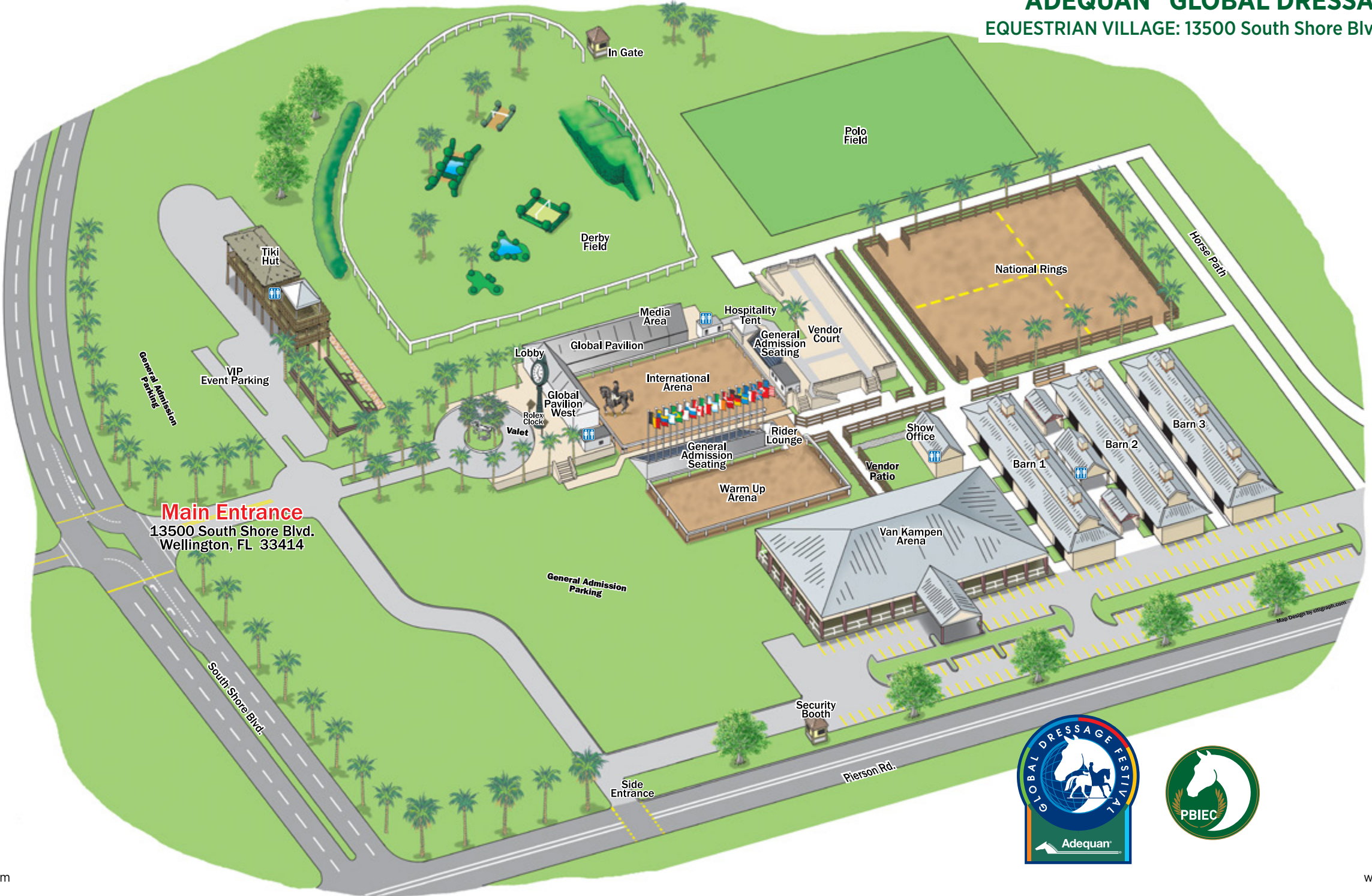
The AGDF is a proving ground for the United States Equestrian Team, as well as other international teams, and serves as host of observation trials and qualifiers for such important international events as the Fédération Equestre Internationale (FEI) World Cup Finals, the Olympic Games and FEI World Equestrian Games.

In addition to Olympic and world-class competition, the breadth of competition provides an opportunity for the entire family to participate in the sport together, creating a lifestyle environment unlike any other.





**ADEQUAN® GLOBAL DRESSAGE FESTIVAL**  
EQUESTRIAN VILLAGE: 13500 South Shore Blvd., Wellington FL 33414





THANK YOU FOR YOUR SUPPORT



## PALM BEACH INTERNATIONAL EQUESTRIAN CENTER

Host of the world-famous Winter Equestrian Festival, Adequan® Global Dressage Festival, and the Great Charity Challenge presented by Fidelity Investments®

The equestrian industry has an annual impact of \$220 million on Palm Beach County\*



*What are you doing to get a piece of the action?*



Sponsorship



Advertising  
& Retail



Hospitality

Free General Admission and Free General Parking for Saturday Night Lights at 13500 South Shore Blvd, Wellington, FL at PBIEC (3400 Equestrian Club Drive, Wellington FL) - Daytime Valet Parking Service \$15 (Wednesday-Sunday)

### FRIDAY NIGHT STARS DRESSAGE

Parking Per Carload (\$10) and Valet Available (\$20)

### SATURDAY NIGHT LIGHTS SHOW JUMPING

Parking Per Carload (\$20) and Valet Available (\$30) at 3400 Equestrian Club Drive, Wellington, FL

For more information, contact: 561.793.JUMP (5867)

### ADMINISTRATIVE OFFICE

14440 Pierson Road • Wellington, FL 33414 • [www.pbiec.com](http://www.pbiec.com)



\*According to industry analyses (\$100m equestrian and \$120m tourism expenditures).



PALM BEACH INTERNATIONAL EQUESTRIAN CENTER

561.793.JUMP (5867) | www.pbiec.com

BOX OFFICE AND CONCIERGE

561.793.5867

info@equestriansport.com

SPONSORSHIP

Dan Farrell

dfarrell@equestriansport.com

MARKETING AND COMMUNICATIONS

Michelle Yelton

myelton@equestriansport.com

ADVERTISING and VENDORS

Annette Goyette

561.784.1120

info@equestriansport.com

WEF COMPETITION

David Burton, Jr.

561.793.5867

DRESSAGE

Thomas Baur

thomas@equestriansport.com

GREAT CHARITY CHALLENGE

Anne Caroline Valtin

acv@greatcharitychallenge.com

PLAN AN EVENT

Vaneli Alvarez

561.784.1110

vaneli@equestriansport.com

THE SUITES AND TIKI HUT

Patti Miele

561.784.1125

pmiele@equestriansport.com

TOURS

Barbara Lang

561.784.1129

blang@equestriansport.com

INTERNATIONAL CLUB MEMBERSHIP

Kathleen LaMour

561-784-1106

klamour@equestriansport.com

The Spectator’s Guide to Equestrian Competition

GRAND PRIX SHOW JUMPING

Jumping is the best known and is also one of the three Olympic equestrian sports, along with Dressage and Eventing. As in all Equestrian sports men and women compete on equal terms. The Olympic sport of Grand Prix show jumping is the highest and most challenging level of jumping competition. Men and women compete as equals over a set course of obstacles that can be as tall as 1.60 meters (5.25 feet) in height. They must clear all of the fences without knocking down a rail and within the time allowed in order to return for the second round, also known as the “jump-off,” and be the fastest with the least faults to win.

GUIDE TO SHOW JUMPING SCORING

Penalties in show jumping competitions are referred to as “faults.” Knocking down a rail or a pole on a jump is 4 faults, as is putting a foot in the water jump or the first refusal. In all jumper classes, falls and going off-course result in elimination, as does a second refusal.

SHOW JUMPING FAULTS AND PENALTIES

Knocking over a jump: 4 faults

Refusing a jump: 4 faults

Two refusals: Eliminated

Rider falls off: Eliminated

Over the time allowed: 1 fault for every second or portion thereof over the time allowed.

HUNTERS

Hunt seat competitions are based upon elegant traditions arising from the foxhunt. Hunters differ from jumpers because they are judged on the style, movement, and technical proficiency of the horse and rider within the constraints of the set course design. Hunters should display jumping ability, manners, style, an even pace, and quality.

EQUITATION

Equitation competition is offered for junior and amateur riders and is judged based on the style and form of the rider. Horses are not judged in this discipline, but successful riders will ensure that their horses are well behaved. Riders can be judged over fences or on the flat.

DRESSAGE

Dressage is a competitive equestrian sport, defined by the International Equestrian Federation (FEI) as “the highest expression of horse training.” The rider will be relaxed and appear effort-free while the horse willingly performs the requested movement. In modern dressage competition, successful training at the various levels is demonstrated through the performance of “tests”, which include a prescribed series of movements ridden within a standard arena. Dressage is considered the most artistic of the equestrian sports and can be traced back centuries. It is the highest expression of horse training. The Freestyle is especially choreographed and performed to music.

FEI

Fédération Equestre Internationale is based in Lausanne, Switzerland and is the governing body for all Olympic equestrian disciplines.

CONCOURS DE SAUT INTERNATIONAL – CSI

The ranking system for show jumping. CSI is broken down into a starrng system, the higher the prize money the higher number of stars: e.g. CSI 5\* prize money over \$500,000. CSI-W is a show jumping world cup competition.

CONCOURS DE DRESSAGE INTERNATIONAL – CDI

The ranking system for dressage with the same starrng system as for show jumping.

All photos courtesy of:

Lexey Hall, JRPR, Elena Lusenti, Mancini Photos, Sportfot, SusanJStickle.com

JOIN US ONLINE!



Facebook:

www.facebook.com/equestriansportproductions

www.facebook.com/winterequestrianfestival

www.facebook.com/globaldressagefestival



Twitter: @esp\_wef @esp\_gdf



Instagram:

@esp\_wef

@adequanglobaldressagefest





International Polo Club Palm Beach (IPC) is the premier polo destination in the world, hosting the largest field of high-goal teams and the most prestigious polo tournaments in the United States. World-renowned players and polo enthusiasts alike come to Wellington, Florida, each winter season to enjoy their love of the sport at the most prominent polo facility the sport has to offer.

Spanning nearly 250 acres, IPC is the largest and most spectator-friendly polo facility in the United States. Elite players pilot polo ponies at speeds that can reach 35 miles per hour across a sweeping field the size of nine football fields.

Created with players and spectators in mind, IPC includes seven state-of-the-art tournament fields. They can accommodate multiple games simultaneously, ensuring that the action continues from the first to the last game of the day.

Polo matches are open to the public, with a wide range of accommodations including elegant grandstand viewing, field tailgating, stadium seating, field side champagne

brunch at The Pavilion, and exclusive sponsor boxes overlooking the impressive U.S. Polo Assn. field.

The 2019 Palm Beach Polo Season runs from December 30 through April 21. Whether one prefers a low-key match on the backfields during the week or Sunday's 3 p.m. featured stadium game, IPC offers options for all levels of polo enthusiasts.

**Stadium Seats**

Stadium seats spread out over three sections (south, center, and north) and are situated along the field closest to the action. A \$30 stadium seating ticket gets you an assigned seat in the stadium. Full service bars are located on the north and south ends of the section.

**Box Seats**

Located above the stadium seats, members have a comfortable view of the action. These limited availability boxes can each seat eight. A seat costs \$150, and while the boxes are typically purchased as a set of seats, there are a number of individual box seats available for each match. No need to leave your seat.



**East Side Tailgate**

Polo fans set up tents east of the field, on either side of The Pavilion. \$6,000 to reserve one of the 50 coveted 10-by-10-foot member tents for the season. For each match, you receive 12 complimentary tickets. Additional friends can join your tailgate with a general admission ticket.

**The Pavilion**

On the east side of the field, The Pavilion can host more than 700 guests each Sunday.

The Pavilion Champagne Brunch is an ever-changing array of delicious items spread out over various stations. With a fun atmosphere and a prime sidelines view of the polo match, The Pavilion is a prime ticket to the action.

**Brunch Options**

- \$125\* - Veranda Seating Per Person
- \$325\* - Veranda Seating for two and one complimentary bottle of Veuve Clicquot
- \$825\* - Veranda Table for six and one complimentary bottle of Veuve Clicquot

**Celebrity Cruises Polo VIP Lounge**

Nestled on the North end of the Pavilion, you will find the Celebrity Cruises Polo VIP Lounge experience. This VIP experience includes exclusive field-side lounge seating, lavish gourmet brunch buffet, exclusive chef station, luxury gift bag and expedited valet entry.

**Brunch Options**

- \$200\* -VIP Lounge Seating Per Person and swag bag
  - \$475\* - VIP Lounge Seating for two and one complimentary bottle of Veuve Clicquot
  - \$1275\* - VIP Lounge Seating Table for six and one complimentary bottle of Veuve Clicquot
- \*non-alcoholic beverages included in all packages

**Games every Sunday at 3:00 PM through April 21.**  
**The Pavilion opens at 2:00 PM**



**INTERNATIONAL POLO CLUB PALM BEACH**  
561.204.5687 [www.internationalpoloclub.com](http://www.internationalpoloclub.com)





All photos courtesy of LILA Photo and David Lominska

## Activities on Sunday

Several activities are offered for all Sunday afternoon games across the property. The fun-filled Kids Zone sponsored by Wellington Regional Medical Center will be available for children to enjoy bouncy houses, games, face painting, and more while attending the match at 3pm. Multiple shopping options are also accessible to spectators while they are on-site Sunday behind the Grand Stadium. Vendors offer a variety of products and change weekly. During half-time everyone is invited onto the field for a complimentary glass of champagne and ice cream –and to stop some divots! The fun continues after the match in the Pavilion at the After Party. Live entertainment and cocktails will be served to celebrate the winning team.



### BOX OFFICE AND CONCIERGE

Maria Feola | 561.282.5334  
mfeola@internationalpoloclub.com

### MEMBERSHIP

Carole Thompson | 561.282.5303  
cthompson@internationalpoloclub.com

### SUNDAY BRUNCH TICKETS

561.838.3409  
internationalpoloclub.ticketleap.com

### SPONSORSHIP

Dan Farrell  
dfarrell@equestriansport.com

### EVENTS

Vaneli Alvarez | 561.784.1110  
vaneli@equestriansport.com

### MEDIA

Caroline Roche  
croche@equestriansport.com

### ADVERTISING and VENDORS

Annette Goyette | 561.784.1120  
info@equestriansport.com

### COMPETITION

Jimmy Newman | 561.282.5290 Polo Hotline

## High-Goal Tournaments at IPC

During the 17-week season spanning from December 30 through April 21, IPC hosts five 20-goal tournaments and three 22-goal tournaments.

### 20 GOAL

#### Herbie Pennell Cup

Rated at 8 goals indoors, Alfred “Herbie” Pennell was one of the top arena players in this country’s greatest era of indoor polo, the 1950s and 1960s. As a 6-goal player outdoors, Herbie proved to be an asset to every team he played on. Always a cagey ball handler and a suburb horseman, Herbie was also one of the most successful polo club managers.

#### Joe Barry Memorial Cup

Harold “Joe” Barry has been described as a galloping oak tree with the soul of a poet. An impenetrable back at 9 goals, no one could hit a longer ball or provide a more reliable presence. Soft-spoken off the field and ever the gentleman on the field, polo has no better role model than Joe.

#### Ylvisaker Cup

A visionary businessman and former captain of the Yale polo team, Bill Ylvisaker founded Palm Beach Polo & Country Club. He also founded the Polo Training Foundation to teach and develop young polo players. During his playing career, Bill was a 7-goal player and won three U.S. Open championships, two Coronation Cups against England and Australia, the USPA Gold Cup and four national 20-goal championships. He served as chairman of the USPA from 1970-75.

#### Iglehart Cup

The Iglehart Cup is played in honor of Phillip Iglehart. Phillip was a 7-goal player and competed on numerous championship polo teams. He was instrumental in founding the Polo Museum and Hall of Fame. Phillip was the key figure in relocating the former Gulfstream Polo Club in Lake Worth, Florida, when development forced the club from its former oceanside location in Briney Breezes, Florida.

### 22 GOAL

#### USPA C.V. Whitney Cup

This tournament, first held in 1979, is named in memory of Cornelius Vanderbilt “Sonny” Whitney who, along with his cousin John Hay Whitney, was a major polo patron in the 1930s. The son of Hall of Fame patron Harry Payne Whitney, C.V. won the U.S. Open three times (twice against his brother) and was a renowned owner and breeder of Thoroughbred horses.

#### USPA Gold Cup®

The 22 Goal USPA Gold Cup, first played in 1974 at the Oakbrook Polo Club in Illinois, is a symbol of professionalism, good sportsmanship and high-goal polo at its finest. This tournament has been played at various polo clubs throughout its history. Since 2007 IPC has proudly hosted this prestigious event.

#### U.S. Open Polo Championship®

The U.S. Open Polo Championship, the most prestigious tournament in the United States, dates back to 1904 when it was first played at Van Cortlandt Park, New York. It has been played at IPC since 2004.

#### The GAUNTLET OF POLO™

The GAUNTLET OF POLO™ is anticipated to bring in tens of thousands of fans from around the world and should break attendance records, creating an immediate positive effect for the Palm Beach community and surrounding areas. The 2019 tournament series begins with the C.V. Whitney Cup held February 13-24, 2019 and continues with the USPA Gold Cup, February 24- March 24, 2019 culminating with the U.S. Open Polo Championship® March 27-April 21, 2019.

### JOIN US ONLINE!



**Facebook:** [www.facebook.com/intlpoloclub](https://www.facebook.com/intlpoloclub)



**Twitter:** [Twitter @intlpoloclub](https://twitter.com/intlpoloclub)



**Instagram:** [@internationalpoloclub](https://www.instagram.com/internationalpoloclub)



**Snapchat:** [@intlpoloclub](https://www.snapchat.com/add/intlpoloclub)



PLAY

Plays are based on the “line of the ball,” an imaginary line created by the ball as it travels down the field. It represents a right-of-way for the last player striking the ball, and is the basis for most fouls in the game. Players may try to hook or “ride off ” their opponents in an effort to gain control of the ball.

TEAMS AND HANDICAPS

A team consists of four mounted players and can be a mix of both men and women. Players are handicapped on a scale of -2 to 10, as determined by a player’s horsemanship, hitting ability, quality of horses, team play and game sense. The team handicap is the sum of its players’ total handicaps. A player’s jersey number reflects the position they play, with each number indicating a different objective.

THE GAME OF POLO

A sport unlike any other, polo showcases the powerful bond between a player and his or her equine partner. As one of the oldest team sports, polo is an exhilarating combination of horsepower, athleticism and control. Competing on a 300 by 160 yard grass field, players score by driving the ball into the opposing team’s goal using a bamboo mallet while riding at speeds of up to 35 mph.

THE HORSES

Although the real stars of the game are called polo “ponies,” the term is just a tradition; an old rule limiting their height was dropped in 1919. Today’s players prefer horses with a Thoroughbred’s speed and stamina in their bloodlines. These four-legged athletes can run two miles in a single chukker: seven-and-a-half minutes of starting, stopping, swapping from offense to defense in a single stride. The mane is shaved and the tail wrapped so that they are not entangled in reins, mallets and other equipment, especially when the horses are bumping shoulder to shoulder at 35 mph.

EQUIPMENT

Players wear a safety helmet, knee-high boots, white pants, jersey and carry a polo mallet held in the right hand during play. The mallet is made of a bamboo shaft measuring between 48 to 54 inches in length with a wooden head. The game ball is made of hard plastic and is comparable in size to a baseball.

THE OFFICIALS

During games, two mounted Umpires officiate on the field while a Referee assists from the sidelines. The rules of polo are designed to allow both the players and their equine partners the opportunity to maximize their athletic skills in a safe and fair environment.

HALFTIME

As a sport steeped in tradition, the “Divot Stomp” is one of polo’s oldest practices. At halftime, spectators are invited to walk onto the field to socialize and replace the divots that are created by the horses’ hooves during play. The ten-minute break in the middle of the game gives players and horses a chance to rest and regroup.

For more information on the rules and regulations of polo please visit [polo.org](http://polo.org)



International Polo Club  
3667 120th Avenue South, Wellington, FL 33414







The Polo School at IPC accepts students from all ages, riding levels, and disciplines for polo lessons. The program currently has nine ponies available for polo lessons, seven days a week by appointment. The ponies are stabled on-site at the International Polo Club and the lessons will take place in one of the practice fields located on the club grounds. Group lessons, practice chukkers, and training on the polo simulator are also available.



**Rates:**

- Introductory lesson: \$75
- Single lesson: \$150/hour
- Package of 10 lessons: \$125/hour

**What to Bring:**

- Helmet if you have one (if not, we can provide)
- Riding boots (or shoes with a heel)
- Riding pants, tights, or comfortable jeans

For more information or to request a lesson, please contact [jgridley@equestriansport.com](mailto:jgridley@equestriansport.com).

**Gladiator Polo™**

Gladiator Polo™ originated in Wellington, FL as a way to expand the reach of equestrian sport to fans of action-packed events like hockey or football. It combines elements of both Field Polo and Arena Polo and in just under a year has garnered both a national and international following.

Contrary to traditional equestrian competitions where audience participation is encouraged only before and after a rider competes, Gladiator Polo™ is fueled by a rowdy crowd. Spectators are encouraged to cheer on their favorite team throughout the entire match.

There are two teams of three players pitted against each other in a small, enclosed arena, giving spectators an up close and personal look at the action. In this Roman-themed event, horse and rider teams wear distinctive colors – from the players' helmets all the way down to the horses' leg wraps – making it easy for spectators to follow the game and cheer on their favorite side.

The match is played on a regulation 300-feet by 150-feet field, enclosed by walls of four or more feet in height. The

game consists of six chukkers each lasting for five minutes. Riders change horses at the end of each chukker. Gladiator Polo™ does not require the large number of horses to play that outdoor/grass polo demands. Many players use horses twice, alternating horses each chukker.

The game ball is similar to a mini soccer ball, larger than the small and hard plastic ball used outdoor. While the larger size gives the new player confidence in hitting the ball, proper technique is necessary because the arena game is played on a sand mixture with the ball bouncing on the uneven surface and off the arena walls.

Gladiator Polo™ can be played either indoors or outdoors, day or night under lights and weather permitting, all year around. Many clubs only play Arena Polo due to the high cost of maintaining grass fields and the smaller field size required.







©DAVID LOMINSKA

## International Polo Club

polo | entertainment | dining | shopping

*Your Equestrian Lifestyle Destination*

